



Vermont Road, SE19 | £300,000

020 8702 9333

crystalpalace@pedderproperty.com

pedder
We live local



In General

- One bedroom period conversion
- No onward chain
- Direct access to a private garden
- Highly regarded road
- Separate kitchen
- Share of Freehold
- Off-Street parking

In Detail

A one bedroom ground floor garden flat positioned on a highly popular road nearby central Crystal Palace and available for sale with no onward chain and a share of freehold.

This property forms part of an attractive brick-fronted Victorian building and, whilst it could benefit from some cosmetic upgrades, provides the raw materials and a blank canvas for a new owner to make their own.

Highlights include fitted bedroom storage, a separate kitchen, and a shower room with a rainfall fitting. Also, direct access to a low maintenance private garden with side access and a sunny south-easterly aspect.

Vermont Road is a tranquil tree-lined street comprising of similar styles of property, accessed just off of Harold Road. The location is primarily served by both Crystal Palace and Gipsy Hill rail links and works well for proximity the many amenities at the centre of town. For those seeking green open spaces, the property is nearby Upper Norwood Recreation Ground and both Westow and Crystal Palace Parks.

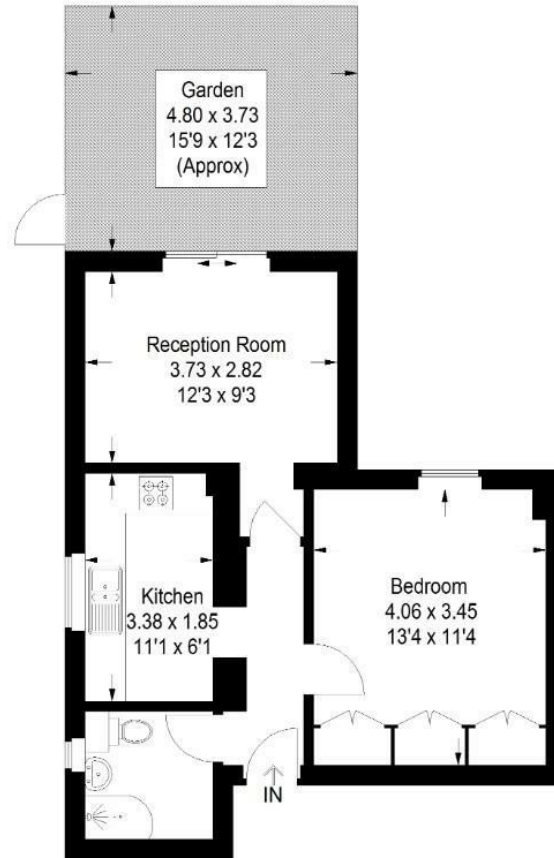
EPC: C | Council tax band: B | Lease: TBC years remaining | SC: £50pm | BI: £250pa



Floorplan

Vermont Road, SE19

Approximate Gross Internal Area
42.9 sq m / 462 sq ft



Ground Floor

Copyright www.pedderproperty.com © 2026

These plans are for representation purposes only as defined by RICS - Code of Measuring Practice. Not drawn to Scale. Windows and door openings are approximate. Please check all dimensions, shapes and compass bearings before making any decisions reliant upon them.

Energy Efficiency Rating		Current	Potential
Very energy efficient - lower running costs			
102 plus) A			
81-101) B			
69-80) C			
55-68) D		69	75
39-54) E			
21-38) F			
1-20) G			
Not energy efficient - higher running costs			
England & Wales	EU Directive 2002/91/EC		

Pedder Property Ltd trading as Pedder for themselves and for the vendor/landlord of this property whose agents they are, give notice that (1) these particulars do not constitute any part of an offer or contract, (2) all statements contained within these particulars are made without responsibility on the part of Pedder or the vendor/landlord, (3) whilst made in good faith, none of the statements contained within these particulars are to be relied upon as a statement of representation or fact, (4) any intending purchaser/tenant must satisfy him/herself by inspection or otherwise as to the correctness of each of the statements contained within these particulars, (5) the vendor/landlord does not make or give either Pedder or any person in their employment any authority to make or give representation or warranty whatsoever in relation to this property.